

# **Corrales Bosque Preserve Management Guidelines**

**Corrales Bosque Advisory Commission**

Joan Hashimoto, Chairperson

March 2021

# Purpose

These management guidelines were developed to provide direction to the Village of Corrales Governing Body, Village of Corrales staff, and the Corrales Bosque Advisory Commission.







# Corrales Bosque Preserve

The mission of the Village of Corrales in creating the Corrales Bosque Preserve (the Preserve) is to **preserve and protect the natural and native conditions, habitat, and wildlife in the Preserve** in order to ensure that an increasing human population does not adversely affect or otherwise change the Rio Grande bosque within the village, leaving no areas preserved and protected in their natural condition.

*Village of Corrales Ordinance 11-1; original Ordinance 234, 1990*







































# 1. Animal and Plant Life

- Protect and promote a **variety of habitats**, including a mix of tree and shrub heights and species, grass meadows, younger willow stands, and a mix of water channel types in order to maintain a **biologically diverse ecosystem of wildlife populations and plant communities**
- Mitigate detrimental effects of **invasive plants** by removal when appropriate
- Consider introduction of **canopy tree species** adapted to changing climatic and hydrologic conditions
- Maximize use of **native plants** over non-natives for any projects

# Signage and Doggie Stations













## 2. Environment and Pollution

- Reduce **non-point source pollution** by encouraging pet waste pickup
- Minimize use of **pesticides and herbicides**
- Prefer mechanical treatment of invasive plant species over chemical treatments
- Prioritize **bank-lowering and backwater creation** projects and maintain current backwater channel functionality







### 3. Corrales Fire & Police Departments

- Conduct fire risk mitigation efforts such as **shaded fuel break** maintenance and **targeted removal of invasive species and dead and down vegetation** without compromising other Preserve management principles and guidelines
- Close the Preserve in **times of high fire danger** or for public safety threats
- **Patrol** the Preserve to enforce Village ordinances



















## 4. Recreation

- Manage as a **natural area for passive**, (non-motorized and non-consumptive) **slow speed recreational activities** including walking, running, horse riding, bicycling, photography, and bird-watching
- Prohibit infrastructure development contrary to natural and protected conditions, including paving or resurfacing of roads and trails
- Discourage creation of new trails through the forest and down levee road slopes

Corrales\_Mid\_South\_2018 - updated 6-11-18.xlsx - Excel

FileHomeInsertPage LayoutFormulasDataReviewViewHelp

ClipboardFontAlignmentNumberStylesCellsEditing

A128

	A	B	C	D	E	F	G	H	I	J	K	L	M	N	O	P	Q
1	Last updated: 3/2/18		Last Number Used: 269														
2	Route	Active name 2018	Stick name	X	Y	Date found	Size	Cond	Dir. from bole	Dir. from int. path	Note	Dates checked	Checked by	Species	Substrate	Previous active name	
3	Corr-S		Z260	353886	3898407	4/17/14	L	G	Over	E	Incubating female.	5/3/17	GG		CW	ZCH1701, ZCH1501, ZCH1402	
4	V1	ZCH18TA	Z260	353886	3898407		L	G	Over	E	New sticks have been added.	3/21/18	GG/JH	CH	CW	ZCH1701, ZCH1501, ZCH1402	
5	V2	ZCH18TA	Z260	353886	3898407		VL	G	Over	E	Lots of new sticks! Adult M and F in area. Female begging 30 m to SW. On return female perched at levee begging	4/10/2018	GG/JH	CH	CW	ZCH1701, ZCH1501, ZCH1402	
6	V3		Z260	353886	3898407		VL	G	Over	E	New sticks with green leaves attached. M and F adults within ~100 m of nest. Female begging.	4/17/2018	JH				
7	V4		Z260	353886	3898407		VL	G	Over	E	F begging NW of nest, M perched 30 m S w/ bloody material at feet.	4/23/2018	JH				
8	V5		Z260	353886	3898407		VL	G	Over	E	F sitting on nest	4/26/2018	JH				
9	V6		Z260	353886	3898407		VL	G	Over	E	F on branch .5M of nest then off to nearby CW to begin begging.	5/2/2018	JH				
10	V7		Z260	353886	3898407		VL	G	Over	E	F 30M from nest begging.	5/9/2018	JH				
	V8		Z260	353886	3898407		VL	G	Over	E	F tearing prey up on prey perch, M flew in and they	5/16/2018	JH				

Potentially Active Nests

Historic Nests

115%



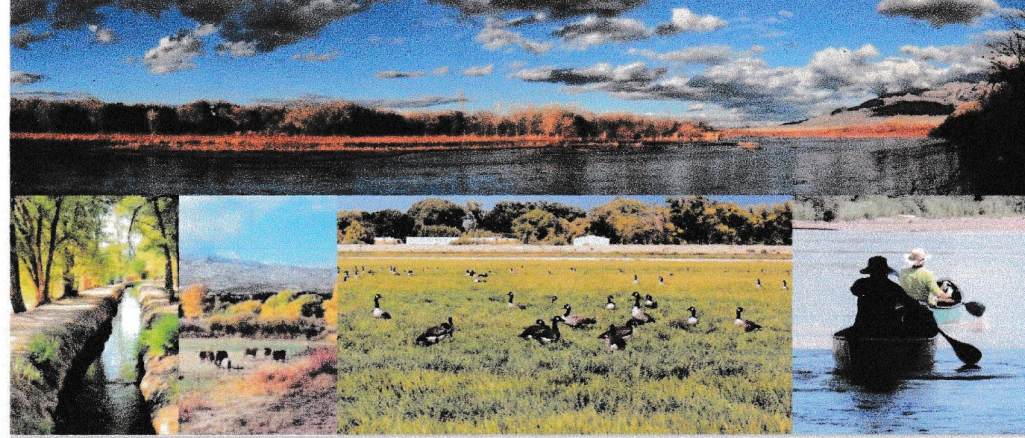




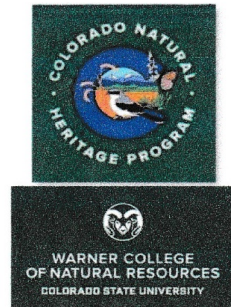
## 5. Research and Education

- Allow use of the Preserve as a resource to promote **non-destructive research** and monitoring activities that will help inform management decisions
- Promote use of the Preserve for **educational activities**

# Middle Rio Grande Conservation Action Plan



## *Framework and Status Assessment*



Version 1.2  
October, 2019



# DRAFT Conceptual Design

## Moderate Flow



## 6. Interagency Cooperation

- Coordinate plans and activities with the **Middle Rio Grande Conservancy District**, owner and co-manager with Corrales of the Preserve
- Seek resources from and partnerships with **universities, state and federal agencies, and Pueblos and local governments** for projects that support the mission of the Preserve
- Consider relevant **planning documents and data** produced by state and local agencies, universities, the Village of Corrales, and other organizations in guiding management decisions

# Bosque Advisory Commission

Joan Hashimoto, chairperson

Mary Chappelle, secretary

Tim Gonzales

Joan Morrison

Lonnie Peets

Eric Reese

# References & Credits

The Corrales Bosque Preserve, by Jim Findley, 2005

Corrales Habitat Management Plan – draft, 2009

Nature Preserve gate signs (image)

Corrales Important Bird Area (IBA) Application-2013

Middle Rio Grande Conservation Action Plan - update September 2019

Tree guide- [nature.org/newmexicotrees](http://nature.org/newmexicotrees)

## Photo Credits:

- Louis Bledsoe (bicyclists)
- Terry Brown (Boy Scouts)
- Marcia Ewen (horse riders)
- David Krueper (wood duck and ducklings)
- Joan and Fred Hashimoto



