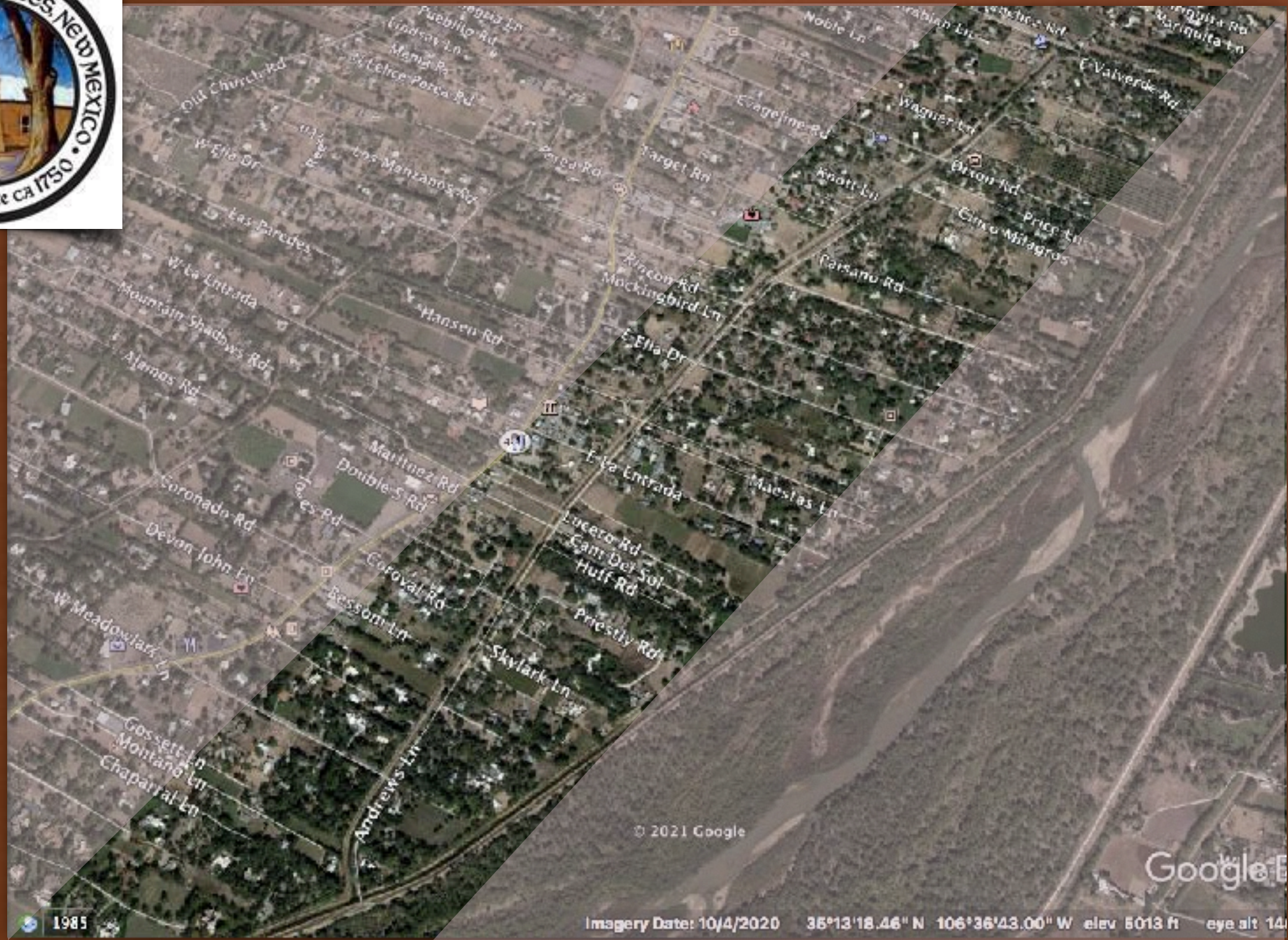


VILLAGE COUNCIL WORKSHOP

CORRALES INTERIOR DRAIN COMMITTEE

MAY 5, 2021



CORRALES INTERIOR DRAIN COMMITTEE

EXISTING CONDITIONS

- Site Visits and Documentation of existing conditions by Committee and MRGCD
- 25.6 acres
- 1.9 miles long, 120 feet wide
- Owned in fee by MRGCD
- Licensed access agreements
- Maintenance currently by MRCGD and Village



CORRALES INTERIOR DRAIN COMMITTEE

MISSION

- Created by Village Resolution, August 18, 2020
- Committee Mission Statement

"Our mission is to identify and help to implement ways in which the Interior Drain and its right-of-way may be improved for safe, enjoyable and essential public use while maintaining tranquility for adjacent residents."



CORRALES INTERIOR DRAIN COMMITTEE

UPDATE OF ACTIVITIES

- Committee Mission
- Documenting What's There
- MRGCD Meetings
- Village Meetings
- Research and Visioning
- Next Steps
 - Community Outreach
 - Planning
 - Budget



CORRALES INTERIOR DRAIN COMMITTEE

GIS MAPS

- 100 + adjoining neighbors

Ditch - south end



July 23, 2020

1:9,028

Ditch - north end



DOCUMENTING WHAT'S THERE

SITE SURVEY JULY 2020																						
DITCH SECTION	Defining characteristic	Access	Initial thoughts recommendations ideas for the section	Ideas for full length of ditch	Characteristic categories																	
					Natural features					Built Environments			Topography			Trails intersections		Adjacencies and connections		Uses		
					vegetation: species dominant invasive-native or cultivated	habitats: does the vegetation protect or feed wildlife	wildlife	domestic animals	Significant natural features	significant built features a homes, ruins, fencing, gates, note materials and relation to the ditch. try to date their development	infrastructure: utilities, signs, special ditch maintenance areas or MRGCD stuff	note the surroundings relationship to the ditch-setbacks, fencing, houses, fence it or interaction with it	surrounding topography	grates, slopes, drainage, walls, possible problem areas	surface and any subsurface materials	view: view sheds, shade, sunny, private vs. more	intersects: no waterways, paths, roads, trails	bridges and type (size and construction)	Adjacency- keep in mind how this trail/paths intersects or potentially connects to both the close proximity and the far. If it does or doesn't and if this is a good thing or something that's an obstacle to the goals	are there any obstacles or obstructions controlling or directing access (how and why)	recreational uses: like, horse, dog tracks, access to water etc.	
	Doug Please add our Mission Statement Here																					
Clear Ditch to East Meadowlark Lane	Ditch has water, cotton wood and large shade trees, irrigation ditch runs along west side of drainage ditch wild life visible in water	connection to clear ditch recreation	parking spaces at clear ditch always	add water line and hydrants for fire department on full length of ditch.	large shade trees are in peoples yards and border the ditch road providing shade	water runs here and provides aquatic life	muskrats, fish-carp, turtles	horses dogs	shade and water	8 foot fencing at lot that intersects with clear ditch	Clear ditch has an Army Corp bridge	2 homes are set back with fields and cottonwoods fronting the ditch	irrigation grades	west side irrigation ditch is slightly elevated then properties to the west grade drop significantly	dirt	tree lined secludes property and creates feeling of privacy	clear ditch	Amy Corp clear ditch bridges were widely reviewed and had loads of community input before the designs were completed they are now widely accepted	access to Bosque and fishing (if Mucky Ditch is redeveloped for more access to recreations then this entry may see more actively) designs can limit access mindful of neighbors and natural habitat	MRGCD gate at Clear Ditch	horse trail along western irrigation ditch connects to southern side of Village and Bosque.	
		must maintain as access to 3 properties. Map shows possible additional lots that are not built on yet on east side.	fishing piers/stands	determine where vehicle access can be closed or limited, maintain emergency and MRGCD access as needed	cut tails grow in 2.5 to 3 foot water					trash can at clear ditch	road widens at clear ditch, provides parking	Bosque levey dominates SE view shed. Demarcates end of Mucky ditch			mucky ditch slope is not a steep in this section		dead-end at Meadowlark with 4 way stop signs			fishing		
		wets side access is limited to irrigation ditch and non motorized access. No property vehicle access needed on west side		preserve irrigation ditch on west side and recognize trail along that ditch/ add horse or foot bridge across clear ditch from that trail into bosque.	barren.					gates at clear ditch					ditch is wider here		pavement crossed the mucky ditch this is an ugly awkward transition			bicycles		
	fire and rescue access to Bosque		plant additional valley cottonwoods to narrow the road bed	develop landscape areas that narrow roadbed but are developed and maintained by adjacent property owners, provide a simple guide for homeowner development including plant materials	irrigated field					utility lines along east side of ditch road then cross over to west at Meadowlark Lane	sculpture cows face the ditch									walkers joggers		
			retain and add trash cans	add solar powered water circulation, enhancing and enlarging areas where water still flows.						home garbage pick up										horseback rides into bosque		
			dog poop bag stations	add parking areas where they really already exist						mail boxes										access to irrigation loop going north		
			retain water in this section	no hardscapes, paving, concrete etc.																		
				identify wildlife and encourage/preserve/redevelop their habitats																		
				identify native plants and preserve and enhance																		



DOCUMENTING WHAT'S THERE



DOCUMENTING WHAT'S THERE

GREEN CORRIDOR



DOCUMENTING WHAT'S THERE

EXISTING VEHICULAR USE

- Preserve access to property
 - MRGCD wants to document permissions by license
- Opportunity to address safety and separate vehicles from other trail users
- Opportunity to improve air quality and reduce the dust nuisance to neighbors

UNITED STATES
DEPARTMENT OF THE INTERIOR
BUREAU OF RECLAMATION

Project Middle Rio Grande Branch Albuquerque State New Mexico

LICENSE FOR ERECTION AND MAINTENANCE
OF STRUCTURES

1. Pursuant to authority given by the Commissioner of the Bureau of Reclamation, thereto duly authorized by the Secretary of the Interior, the undersigned hereby accepts a license to ~~construct~~ **install and maintain 48-inch culvert in, or a timber bridge over, Corrales Interior Drain**

in connection with the Middle Rio Grande Project, Bureau of Reclamation, constructed pursuant to the act of Congress approved June 17, 1902 (32 Stat., 388), and acts amendatory thereof or supplementary thereto, at ~~about Station 20+01~~ **on Corrales Interior Drain, Tract 58, MRGCD Map 18**

upon the terms and conditions hereinafter set forth:

2. The licensee shall be liable for any and all damages to the property of the United States, or of any third party or parties, by reason of the exercise of the privileges conferred by this license.

3. This license shall continue so long as in the opinion of the licensor it is considered to be expedient and not detrimental to the public interest, and shall be revocable by said officer upon ten days' written notice to the licensee. Upon such revocation the aforesaid structure or structures and all accessories shall be removed without delay at the expense of the licensee *W. J. ...*

4. The aforesaid structure or structures shall be so erected as not to obstruct in any manner the flow of water in the canals, laterals, or drain ditches of the United States, or to interfere in any manner whatsoever with the construction, operation, and maintenance of any part of the Project.

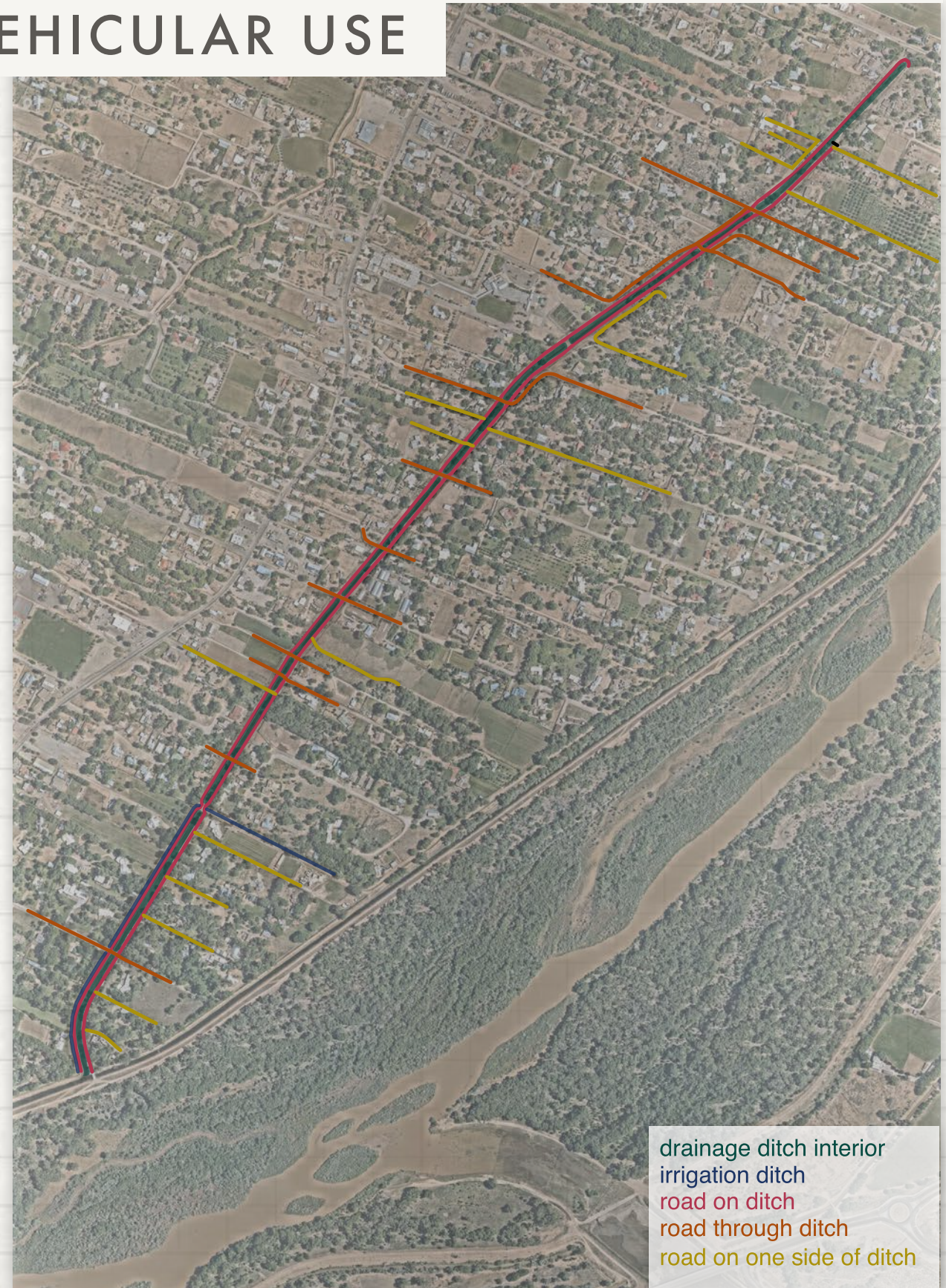
5. In the erection of the aforesaid structure or structures the following specifications and conditions must be complied with:

Prior to installation, licensee shall notify Albuquerque Branch Irrigation Superintendent, Eldon Coe, 843-2279.

An appropriate PRIVATE CROSSING sign shall be placed on each side of the drain.

Installation shall be in accordance with attached drawings and shall be subject to inspection and acceptance by Bureau of Reclamation.

6. **Covenant against Contingent Fees.** Licensee warrants that no person or agency has been employed or retained to solicit or secure this contract upon an agreement or understanding for a commission, percentage, brokerage, or contingent fee, excepting bona fide employees or bona fide established commercial agencies maintained by the licensee for the purpose of securing business. For breach or violation of this warranty, the Government shall have the right to annul this contract without liability or in its discretion to require the licensee to pay, in addition to the contract price or consideration, the full amount of such commission, percentage, brokerage, or contingent fee.



CORRALES INTERIOR DRAIN COMMITTEE

WHAT PROBLEMS ARE WE TRYING TO SOLVE

- Traffic
- Dust
- Safety
- Liability
- Loss of habitat
- Devaluation of property



CORRALES INTERIOR DRAIN COMMITTEE

POSSIBLE SOLUTIONS

- Improve a community resource
- Control vehicular traffic
- Support Village Infrastructure projects
- Provide trails
- Provide wildlife habitat
- Beautify the corridor for neighbors and community
- Preserve water amenities



CORRALES INTERIOR DRAIN COMMITTEE

MRCGD AND VILLAGE DEPARTMENT MEETINGS

- Drain constructed in 1930's to lower water table and reclaim farmland. Because the water table has dropped, the ditch is no longer functioning as a drain.
- Opportunities:
 - A fire suppression line may be installed in the right of way. Committee has met with the VOC Fire Department
 - A waste line may be installed in the right of way. Committee has met with VOC Public Works
 - It is OK to use MRCGD water for plantings. Trees and shrubs in banks could be desirable to prevent erosion of banks. Follow the District's Conservation Action Plan.
- Requirements:
 - MRCGD needs access for maintenance of ditch.
 - Insurance and liability are a big issue: What will the Village take responsibility for?.



Aerial map of south Corrales, 1949

CORRALES INTERIOR DRAIN COMMITTEE

- Based on the existing characteristics of the Interior Drain, there are pond zones, water zones and xeric zones.
- Xeric Zone - dry ditch areas of the interior drain might include tree parks for community use.



CORRALES INTERIOR DRAIN COMMITTEE

- Water Zone - the wet ditch could be used for community activities and support the central Corrales Road section of Corrales.
- A Pond Zone with a calm and relaxing gathering space might include bridges and viewpoints for the community.



CORRALES INTERIOR DRAIN COMMITTEE

GREEN CORRIDOR



- **Preservation of existing trails and wildlife corridor**
 - The Corrales Interior Drain functions as a green corridor that connects the Corrales Bosque Preserve into the heart of the community.
 - Corraleños currently use the ditch banks as trails for running, biking, horse riding, fishing, walking to school, and more. The ditch banks will support these activities and could provide seating areas, trails, connections to nature.
 - The green corridor provides ecological benefits for many birds and animal species by providing habitat and food sources.



CORRALES INTERIOR DRAIN COMMITTEE

PURAIKA- A PLACE OF BUTTERFLIES

- *Puraika - (Keres) - A Place of Butterflies*
 - *Santa Ana Pueblo used to call the lands of Corrales: Puraika - (Keres) a place of butterflies.*
 - *We would like to honor the Santa Ana heritage of Corrales and reintroduce plantings throughout the interior drain project to support butterflies*
- *The Interior Drain can be a Public Butterfly Garden*
 - *The land used to be a swampy area, which was the reason why MRGCD created the drain, to pull down the water table so the land could be used for agriculture. We are confident that this area specifically is where butterflies used to be in great abundance*
- *El Jardin de los Manarcos*
 - *Monarch butterflies already frequent Corrales. Monarch butterflies need milkweed and other plantings.*
 - *We envision the butterfly plantings along the length of the ditch, a thematic constant in the master plan design*



CORRALES INTERIOR DRAIN

RESEARCH AND PLANNING

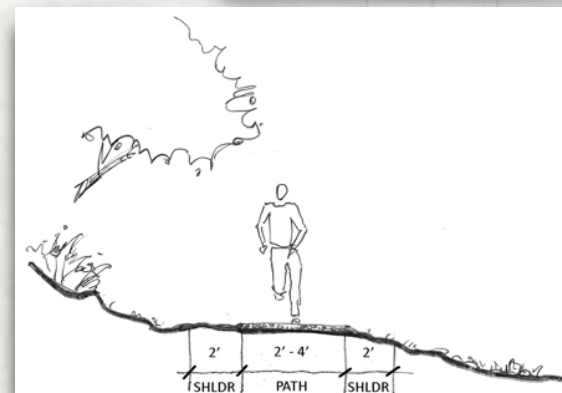
- Other ditch to trail projects in NM
 - Corrales Trails Master Plan
- Develop overlays of uses and users
- Coordination with Village Infrastructure for Fire Suppression and Waste Water



SILVER CITY GREENWAYS AND BIG DITCH MASTER PLAN

Adopted 5/14/2013

Prepared for the Town of Silver City and Silver City MainStreet
Prepared by CommunityByDesign and the New Mexico MainStreet Program



North Branch | Concept

The Confluence

While the challenging hydraulics limit the potential for access, The Confluence represents an iconic threshold to the City of North Adams, offering a unique place for orientation and contemplation.

Wheeler Theater

Enhancing the connection to the largest stream catchment in North Adams, Wheeler Theater connects Broadway Park with the North Branch, with the possibility of brightening Wheeler Creek. The park design flows into the river corridor with amphitheater seating facing a large event/performance terrace at MADS MCCA.

River District

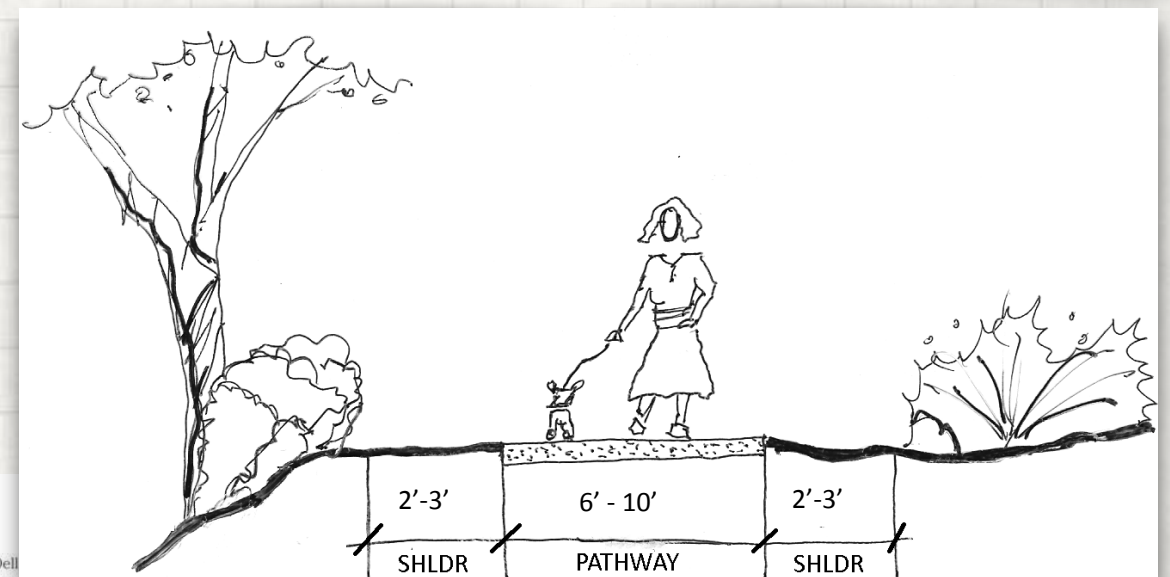
Where the energy of Main Street meets the North Branch, the River District expands the width of the corridor, providing access to the water and a recreational amenity. Improvements in this area would be closely coupled with redevelopment opportunities, creating ideal places to live, work and play.

Willow Dell

Currently the most hidden reach of the North Branch, Willow Dell is transformed into a community asset incorporating historic buildings and redevelopment opportunities. As an eastern gateway to North Adams, Willow Dell incorporates a visitor center, restored floodplain ecology, and community trail connections.

Inspired by the historic bridge along the river and the nearby rising topography to the north (looking from its 2nd floor), the Willow Dell corridor is a narrow, shaded passage which opens up into the Willow Dell area. A through trail, low-flow channel, and floodplain terrace plantings enhance connectivity.

Historic gateway connections connect from Willow Dell to Natural Bridge State Park, providing a safe, scenic pedestrian route between the city and the surrounding natural attractions.



CORRALES INTERIOR DRAIN

NEXT STEP - COMMUNITY OUTREACH

- COUNCIL INPUT ON OUTREACH TO COMMUNITY
 - Committee meetings with Neighbors
 - Beginning May 2021
 - Corrales Fire Department
 - Corrales Public Works
 - Corrales Parks and Recreation
 - Corrales Bosque Commission
 - Village Trails Groups and Equestrians



Proposed community questionnaire
meetings with neighbors
presence at Grower's Market

Questionnaire concerning a study of the Corrales Interior Drain by the village appointed Corrales Interior Drain Committee

Do you know that, with the exception of a few licensed areas, the Corrales Interior Drain, including the roads on both sides of the ditch, is the property of the Middle Rio Grande Conservancy District?

Do you live along the Corrales Interior Drain?

Would you share your address? (only for the purpose of the study)

What do you like or dislike about living in Corrales?

What do you like or dislike about living by the Drain?

Do you cross the Drain to get to your home?

Do you drive along the Drain to get to your home?

Do you drive along the Drain for other reasons besides going to and from your home? If yes for what reasons?

How do you feel about the Drain being used as an alternative route for Corrales Road?

- Very good
- Good
- Neutral
- Bad
- Very bad

Does motorized traffic along the Drain have an effect on you? If yes describe how.

If you have any issues with motorized traffic on the Drain what do you suggest for some solutions?

Would you like to see any changes in the Drain?

I use the Drain for out door recreation such as walking, biking, horseback riding or bird watching

- Frequently
- Sometimes
- Not often
- Not at all

The bird and animal life along the Drain has significant value to me

- Very much
- Somewhat
- Not much
- Not at all

Do you use the drain for other activities? If so what?

What are some activities you would like to see used along the Drain?

What are some activities you would like to see discouraged along the Drain?

CORRALES INTERIOR DRAIN

NEXT STEPS

- Outreach to the community
- Hire a Professional Planner
 - Budget request: \$25,000
- Develop the Master Plan
 - Articulate community goals
 - Phased Implementation
- Do a biological survey
- Grant writing and fundraising
- Questions?

