

VILLAGE OF CORRALES

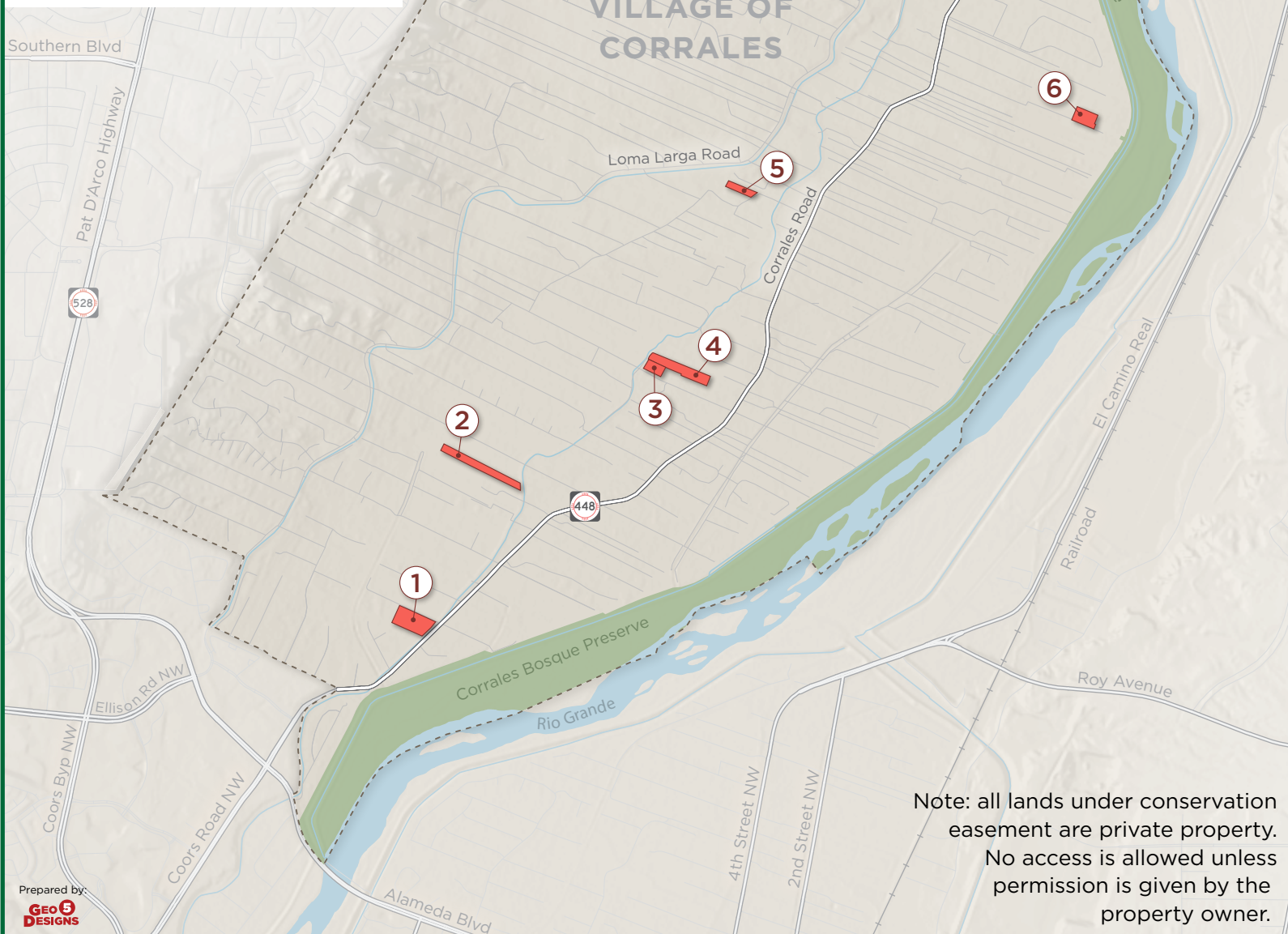
FARMLAND PRESERVATION LANDS



Completed
Conservation Easements

- 1 Porter - 6.2 ac
- 2 Ventana Grande - 6.4 ac
- 3 Kendall - 2.0 ac
- 4 Gonzales - 5.5 ac
- 5 Minge - 2.4 ac
- 6 Boyd - 3.0 ac
- 7 Corrales Gateway - 18.0 ac
- 8 Haslam - 12.6 ac
- 9 Phelps Farm - 9.8 ac
- 10 Lopez Farm - 3.0 ac

ACRES PRESERVED - 68.9 acres



Note: all lands under conservation easement are private property. No access is allowed unless permission is given by the property owner.