

Gonzales Field Trail Proposal

Corrales Pedestrian Bicycle Advisory Commission

Date TBD

A Current Opportunity

- In 2009 5.5 acres of the Gonzales property in the heart of Corrales was acquired by the Village with Farmland Preservation funds.
- A farm access road exists on the North side of the Gonzales Preservation site, extending West from Corrales Road to the acequia.
- A 10ft wide trail easement on the South boundary was established from Corrales Rd to the acequia. This easement allows for a trail connecting Corrales Rd to the Corrales Library.
- A North/South corridor on the East end of the preserved farm land provides the possibility of a spur-trail from the farm road to the Corrales Library
- A generously wide Corrales Road shoulder exists on the East side

Purpose/Goals

- Provide recreational opportunities in the heart of Corrales
- Provide trail connectivity from the West side of Corrales Rd to the Village center, the Corrales library and the East side trail system
- Provide trail connectivity from the East side of Corrales Rd to the Corrales library and the west side trail system
- Celebrate farming heritage of Corrales
- Showcase current farming activities
- Provide beautiful views of active farmland and the Sandia Mountains

Farm Road

Casa Vieja Brewery

Indigo Crow Cafe
American • \$\$\$

Community Sciences
Corporation

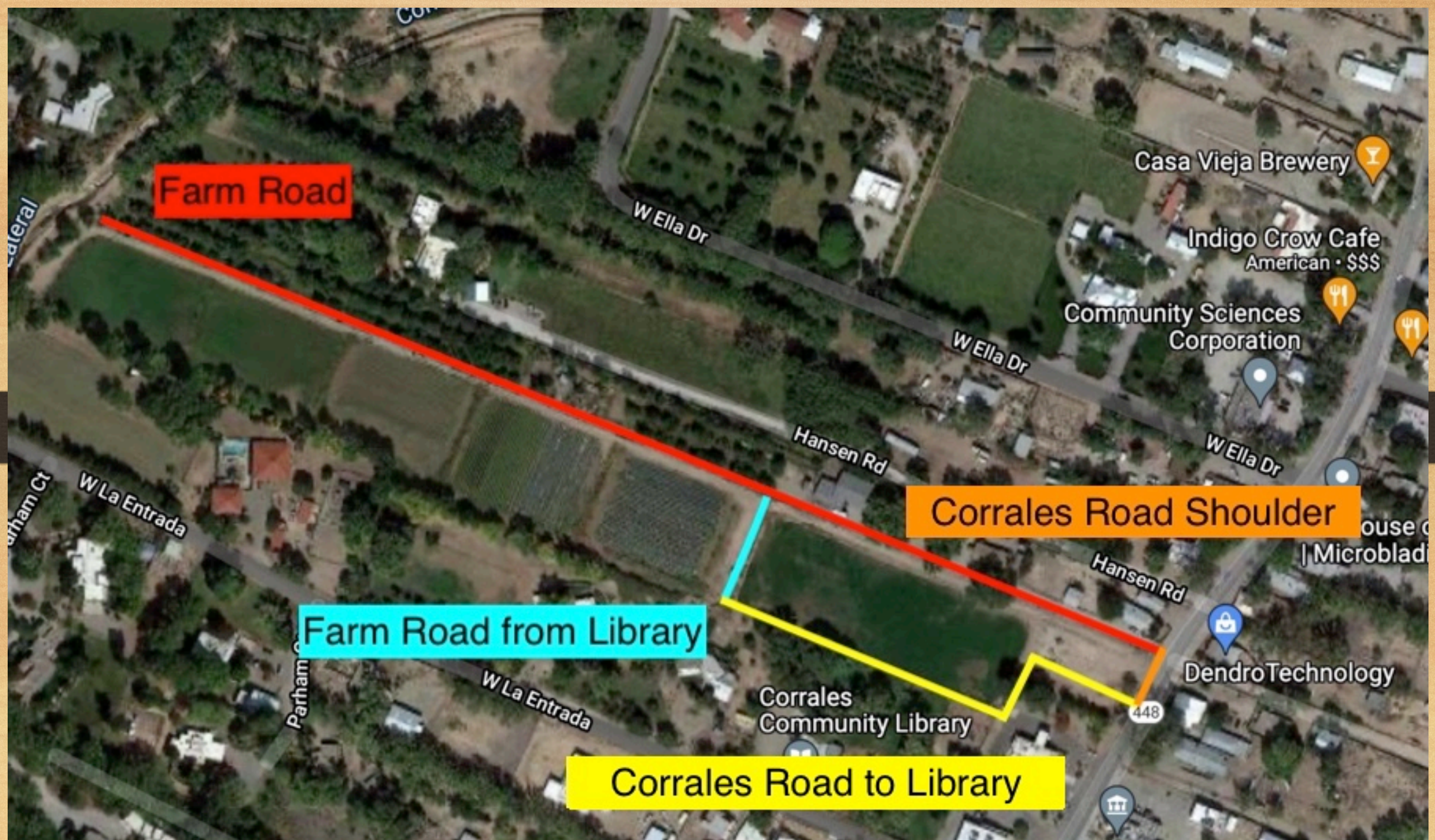
Corrales Road Shoulder

Farm Road from Library

Corrales
Community Library

DendroTechnology

Corrales Road to Library



Work Involved in Creation of Trail

- Tree clearing and/or trimming on south easement from Corrales library to Corrales Rd
- Clearing for trail surface from North farm road to Corrales library, and from Corrales library to Corrales Road on South trail easement.
- Dirt surface to accommodate walkers, runners, mountain/hybrid bikes, and equestrians
- New gate in library fence by band shell particularly for equestrian access to library. Keep existing La Entrada park gate. Adjust grade at Northwest corner to ensure ADA compliance . Physical barrier between the trail and both the private 3 acres and the farmland preservation 5.5 acres
- Creating signage
 - in collaboration with Silverleaf Farms to designate active farming in progress
 - at Corrales Road to designate proper trail alignment
 - Trail courtesy signage at entrances to trail

EXHIBIT 3

20' LEACH FIELD EASEMENT

LOCATED IN LOT 2
JUAN GONZALES BAS SUBDIVISION
VILLAGE OF CORRALES
SANDOVAL COUNTY, NEW MEXICO
MAY 2008

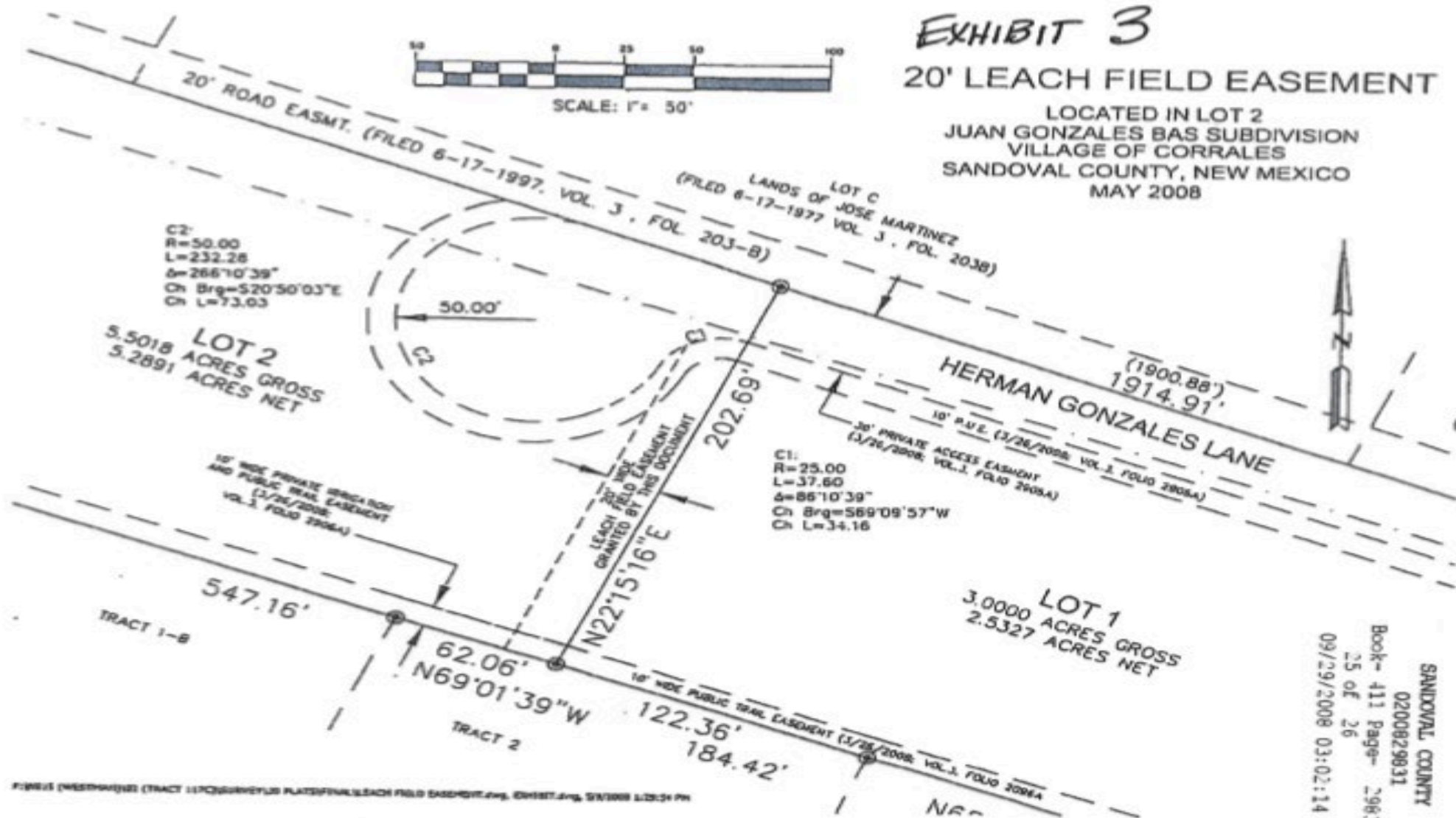


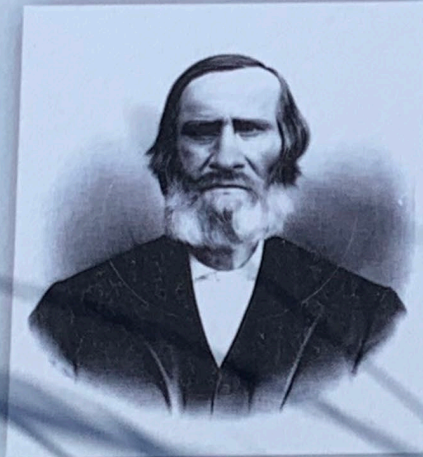
FIGURE 1 (WESTWARD) (TRACT 1) (SURVEY) (3) PLAT (FINAL) (20' LEACH FIELD EASEMENT) (ENG. EXHIBIT) (ENG. 5/1/2008 1:25:31 PM)

SANDOVAL COUNTY
0200829831
Book - 411 Page - 29831
25 of 26
09/29/2008 03:02:14 PM

Welcome to the Juan Gonzales Bas Heritage Farm

This land is part of the original Alameda Land Grant first established by the King of Spain in 1710. In 1712, Capitan Juan Gonzales Bas was granted the land and began to colonize it with other Spanish settlers. For 20 years, Juan Gonzales Bas, who was born in Santa Fe in 1668 and died in Corrales in 1743, served as the Alcalde Mayor of Albuquerque, overseeing the division and cultivation of the land. He founded Corrales along the Rio Grande to provide a fertile environment for livestock and crops.

As was customary for lands granted in New Spain, the holdings were divided into long narrow strips that stretched from the river west across the mesa as land was passed down to multiple family heirs. This land division provided each heir with fertile irrigated land for a kitchen garden (huerta), cultivated cropland (campo), and a contiguous common area (ejido), on the mesa for grazing. Juan Gonzales Bas helped oversee the expansion of the Native American system of diverting water from the river to their fields by forming the acequia network that laid the groundwork for irrigation that still lies at the heart of the community's agricultural structure.



Antonio Jose Santiago Gonzales, a descendant of Corrales founder Juan Gonzales Bas, was born in Corrales in 1816 when it was still under Spanish rule. He farmed here throughout its years under the Mexican Republic (1821-1845), and after United States took possession in 1846, until his death in 1897.

Throughout the 1800's, subsistence farming was the residents' primary occupation. Lacking nearby commercial markets, farmers produced most of what they would need. Members of the community helped one another during harvest and shared in any butchered animal. This cooperation continued into the Great Depression, and though times were difficult, those who lived through it recall that Corraleños had plenty to eat.



The Corrales Farmland Preservation Commission has enabled the protection of over 30 acres of agricultural land in the Village of Corrales, maintaining open space, view sheds and the continued production of local food.

In 2009, descendants of Capitan Juan Gonzales Bas made this 5 1/2 acre strip of the original Spanish grant property available to the people of Corrales through the Corrales Farmland Preservation easement program. This property was purchased by the Village of Corrales through joint funding with the USDA Natural Resources Conservation Service and community bonds passed by the citizens of Corrales in 2004. The land is now held in a protected agricultural easement in perpetuity by the New Mexico Land Conservancy for the continued benefit of the people of Corrales.



**Looking West from Corrales Road,
showing existing farm access road**



Northwest entrance to trail from acequia



La Entrada park gate to proposed trail



Proposed new gate - back of Library Bandshell



Caption

Proposed trail would showcase this farmland



Completion of Gonzales Field Trail would...



Enhance recreational opportunities for Corrales citizens



Provide trail connectivity to Village center and Corrales Library



Showcase Corrales farming heritage and current farming activities



Be created at modest cost and yield significant benefits

A Future Opportunity

- Because a 10 ft. trail easement was secured on the entire South side of the property, there exists the future possibility of creating a fully circumferential trail around the Gonzales property.
- The farthest West acreage of the Farm Land Preservation plot is currently being flood-irrigated. Therefore creation of a trail along the South easement from the Corrales library to the acequia is not currently feasible but should be considered in the future.

Farm Road

Future Opportunity

Farm Road from Library

Corrales Road Shoulder

Corrales Road to Library

Casa Vieja Brewery

Indigo Crow Cafe
American • \$\$\$

Community Sciences
Corporation

Hansen Rd

W Ella Dr

W Ella Dr

W Ella Dr

Hansen Rd

Corrales
Community Library

DendroTechnology

W La Entrada

Parham

448

Project Support

- Corrales Parks and Recreation Commission
- Farmland Preservation Commission
- Corrales Equestrian Advisory Commission
- Corrales Community Library Board
- Corrales Pedestrian Bicycle Advisory Commission